

# Event101A

## Event Data Logger



Choose the Event101A data logger to monitor and record the occurrences of a specific event. With limitless possibilities, this dynamic device can be used for applications ranging from time or traffic studies, or used in conjunction with a rain gauge for rainfall monitoring. The Event101A has up to a 10 year battery life, making it ideal for long term field studies and is a common solution for monitoring gas, water or electric meters.

The Event101A offers an input range of up to 30 V, a reading rate of 4 Hz and a storage capacity of over 400,000 readings with ultra-high speed data download capability. Using the MadgeTech Data Logger Software, the Event101A can be also be configured to utilize the memory wrap option to extend deployment capability or program the device for delayed start up to 18 months in advance.

The terminal block on the Event101A conveniently disconnects from the data logger to retain any wiring connectivity while retrieving the device for data downloads.

Collected data can be downloaded to the software and viewed in graphic, tabular, and summary form. Engineering Units can also be configured to display readings in the desired units automatically. Once downloaded, data can also be exported to Excel® for further custom reporting.

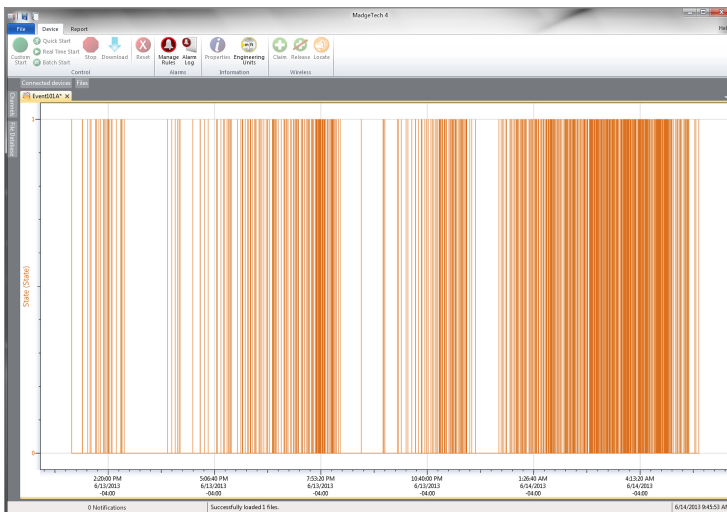
### Features

- 10 Year Battery Life
- 4 Hz Reading Rate
- Multiple Start/Stop Function
- Ultra High Speed Download
- 465,578 Events Storage Capacity
- Memory Wrap
- Battery Life Indicator
- Optional Password Protection
- Field Upgradeable

### Benefits

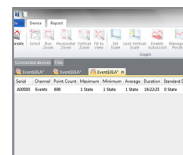
- Simple Setup and Installation
- Minimal Long-Term Maintenance
- Long-Term Field Deployment

## MadgeTech 4 Software Features

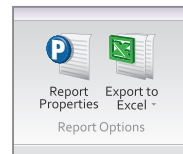


Graph View

- Multiple graph overlay
- Statistics
- Digital calibration
- Zoom in/ zoom out
- Lethality equations (F0, PU)
- Mean Kinetic Temperature
- Full time zone support
- Data annotation
- Min./Max./Average lines
- Summary view



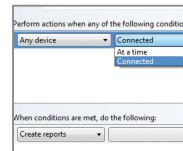
Statistics



Export to Excel

| Time       | Time Zone | Delta     |
|------------|-----------|-----------|
| 1:13:37 PM | -0400     | -00:00:00 |
| 1:14:37 PM | -0400     | +00:01:00 |
| 1:15:37 PM | -0400     | +00:02:00 |
| 1:16:37 PM | -0400     | +00:03:00 |
| 1:17:37 PM | -0400     | +00:04:00 |
| 1:18:37 PM | -0400     | +00:05:00 |
| 1:19:37 PM | -0400     | +00:06:00 |
| 1:20:37 PM | -0400     | +00:07:00 |
| 1:21:37 PM | -0400     | +00:08:00 |
| 1:22:37 PM | -0400     | +00:09:00 |
| 1:23:37 PM | -0400     | +00:10:00 |
| 1:24:37 PM | -0400     | +00:11:00 |
| 1:25:37 PM | -0400     | +00:12:00 |
| 1:26:37 PM | -0400     | +00:13:00 |
| 1:27:37 PM | -0400     | +00:14:00 |
| 1:28:37 PM | -0400     | +00:15:00 |

Tabular Data View



Automation

## Applications

- Monitoring Gas, Water or Electric Meters
- Rainfall Monitoring
- Contact Closure Monitoring
- Time Studies
- Traffic Studies

## SPECIFICATIONS

Specifications are subject to change without notice. Specific warranty remedy limitations apply. Call (603) 456-2011 or go to [madgetech.com](http://madgetech.com) for details.

| MEASUREMENT                            |  |
|--|--|
| <b>Input Connection</b>                | Removable screw terminal   |
| <b>Input Range</b>                     | 0 V to 30 V  |
| <b>Input Low</b>                       | < 0.4 V  |
| <b>Input High</b>                      | > 2.8 V  |
| <b>Internal Weak Pull-Up</b>           | < 60 $\mu$ A   |
| <b>Input Impedance</b>                 | > 60 k $\Omega$  |
| <b>Minimum Input Active (Low) Time</b> | 10 Microseconds  |
| <b>Engineering Units</b>               | Native measurement units can be scaled to display measurement units of another type such as on/off, open/closed or rainfall. |

| GENERAL                         |  |
|---------------------------------|--|
| <b>Start Modes</b>              | Immediate start<br>Delay start up to 18 months<br>Multiple pushbutton start/stop   |
| <b>Stop Modes</b>               | Manual through software<br>Timed (specific date and time)  |
| <b>Multiple Start/Stop Mode</b> | Start and stop the device multiple times without having to download data or communicate with a PC  |
| <b>Real Time Recording</b>      | May be used with PC to monitor and record data in real time  |
| <b>Password Protection</b>      | An optional password may be programmed into the device to restrict access to configuration options. Data may be read out without the password. |

|                                       |  |
|---------------------------------------|--|
| <b>Memory</b>                         | 465,578 readings; software configurable memory wrap                                      |
| <b>Wrap Around</b>                    | Yes  |
| <b>Alarm</b>                          | User selectable high and low limits; blinking LED for alarm and low battery              |
| <b>LEDs</b>                           | 2 status LEDs  |
| <b>Reading Rate</b>                   | 4 Hz up to 1 reading every 24 hours<br>(Device will record 1 event per reading interval) |
| <b>Calibration</b>                    | Digital calibration through software   |
| <b>Calibration Date</b>               | Automatically recorded within device   |
| <b>Battery Type</b>                   | 3.6 V lithium battery included; user replaceable   |
| <b>Battery Life</b>                   | 10 years typical, dependent upon frequency and duty cycle                                |
| <b>Data Format</b>                    | State  |
| <b>Time Accuracy</b>                  | $\pm$ 1 minute/month at 25 °C (77 °F)<br>(Stand alone mode)                              |
| <b>Computer Interface</b>             | USB (interface cable required); 115,200 baud   |
| <b>Operating System Compatibility</b> | Windows XP SP3 or later  |
| <b>Software Compatibility</b>         | Standard Software version 2.04.06 or later<br>Secure Software version 4.1.6.0 or later   |
| <b>Operating Environment</b>          | -40 °C to +80 °C (-40 °F to +176 °F)<br>0 %RH to 95 %RH non-condensing                   |
| <b>Dimensions</b>                     | 1.4 in x 2.1 in x 0.6 in (35 mm x 54 mm x 15 mm)   |
| <b>Material</b>                       | Polycarbonate  |
| <b>Weight</b>                         | 0.9 oz (24 g)  |
| <b>Approvals</b>                      | CE   |

**BATTERY WARNING:** FIRE, EXPLOSION AND SEVERE BURN HAZARD. DO NOT RECHARGE, DISASSEMBLE, HEAT ABOVE 100 °C (212 °F), INCINERATE, CRUSH, OR EXPOSE CONTENTS TO WATER.

## Ordering Information

|                  |              |                                       |
|------------------|--------------|---------------------------------------|
| <b>Event101A</b> | PN 900103-00 | Event Data Logger                     |
| <b>IFC200</b>    | PN 900298-00 | USB interface cable                   |
| <b>LTC-7PN</b>   | PN 900352-00 | Replacement battery for the Event101A |

For Quantity Discounts call (603) 456-2011 or email [sales@madgetech.com](mailto:sales@madgetech.com)

